

MARYSVILLE JOINT UNIFIED SCHOOL DISTRICT
REGULAR MEETING ~ BOARD OF TRUSTEES

July 24, 2012

ADDENDUM TO THE AGENDA

OPEN SESSION – NEW BUSINESS/BOARD OF TRUSTEES

4. ADJUSTMENT TO TRUSTEE AREA BOUNDARY

MOTION

Purpose of the agenda item~

The purpose of the agenda item is to revise the adjustment made to Trustee Area #3 at the 3/27/12 board meeting.

Background~

At the 3/27/12 board meeting, the Board of Trustees approved adjusting the existing boundaries of the trustee areas from the 2010 Census data to meet the guidelines for balanced trustee areas representing local communities.

The current revision is to correct Trustee Area #3. There was a clerical error with the SchoolWorks, Inc. GIS map identifying Hammonton-Smartsville Road as Hammonton Road. This adjustment does not change the balance of population in each trustee area.

Recommendation~

Recommend the Board adjust Trustee Area #3. (The revised map is available to review in the Superintendent's office and/or at www.mjusd.com.)

Dated: July 23, 2011

Posted: July 23, 2011

MARYSVILLE JOINT UNIFIED SCHOOL DISTRICT

1919 B street
Marysville, CA 95901
(530) 741-6000

Approved Trustee Boundary Plan

Marysville Joint Unified
School District

J
U
L
Y

2
0
1
2

Gay S. Todd
Superintendent

SchoolWorks, Inc.
6815 Fair Oaks Blvd., Suite 3
Carmichael, CA 95608
(916) 733-0402
(916) 733-0404-Fax
www.SchoolWorksGIS.com



Facility Problem Solvers

Introduction

The District has reviewed the population demographics and studied the pros and cons of alternate election methods. In addition, several maps have been developed to create trustee areas for "district-based" elections that have been reviewed by the Board. The Marysville Joint Unified School District School Board has chosen to change its election method for board members from an "at-large" method to a "district-based" system. It has chosen "Plan A" as the scenario to implement.

This report shows the analysis of that scenario to verify it meets the legal requirements of the State and Federal laws. The requirements include making sure each Trustee Area represents approximately the same sized population. Using the 2010 Census data we show how many people reside in each Trustee Area and then determine the variance from the goal population. As long as the variance is less than 10% between the areas with the smallest and largest populations, then the Trustee Map is in compliance with the laws.

Secondly, the Racial/Ethnic statistics are provided for the approved Trustee Area Map. This detailed information is provided for use by the County Committee and the U.S. Department of Justice to illustrate the benefits of the change in election methods.

The District held a public hearing as part of its review and approval process to get any input from the local community and their ideas or concerns regarding the process.

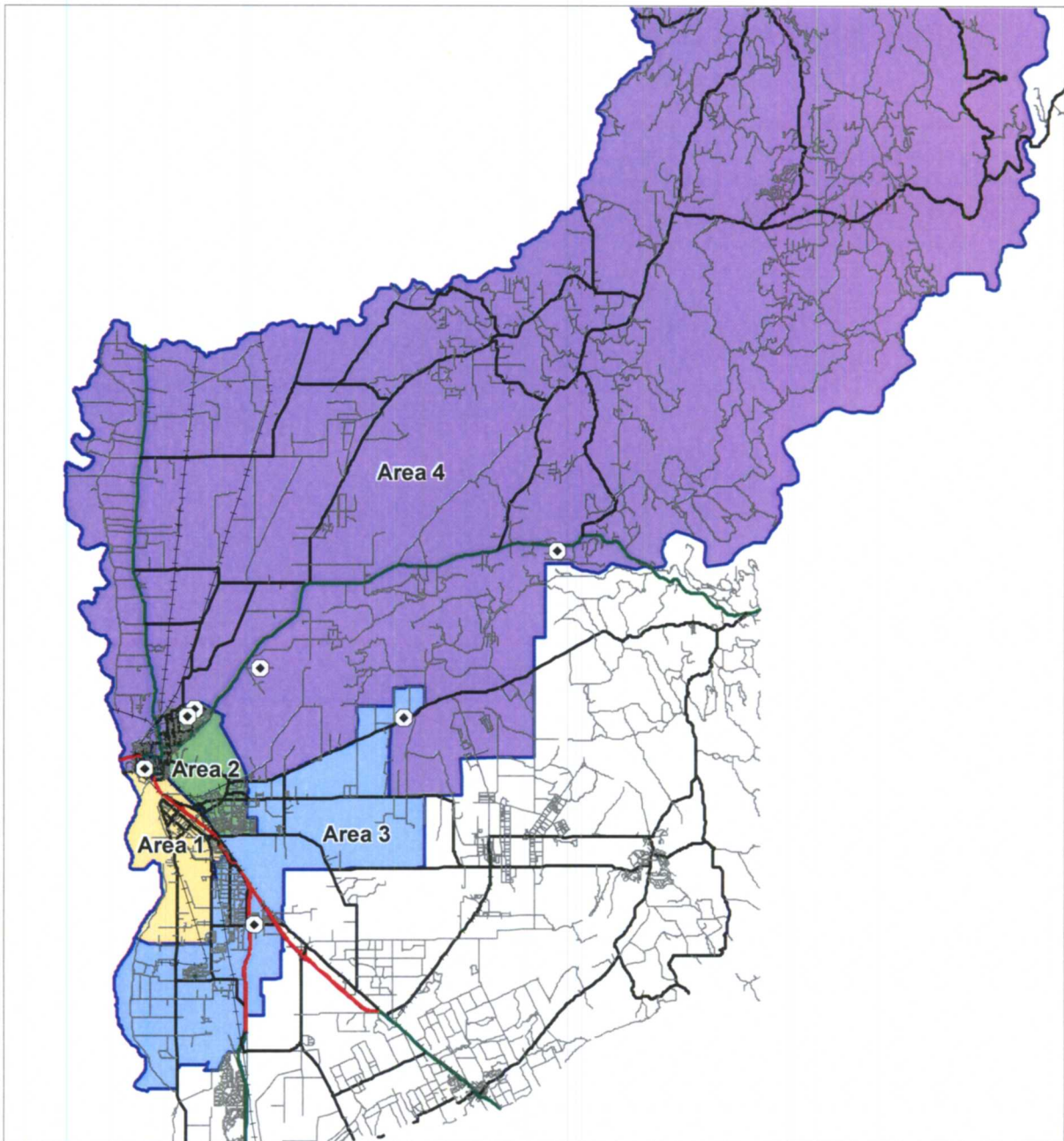
Trustee Boundary Map and Analysis

This approved map/scenario was analyzed using the 2010 Census data which contains data on the population and the ethnicity or race for each individual. The data is also provided for just those people that are at least 18 years old which would be representative of the adult population. The third category of analysis is referred to as "CVAP" which is the Citizen Voting Age Population from the Census Special Tabulation from the American Community Survey.

Some of the general guidelines used for the development of this map included the following:

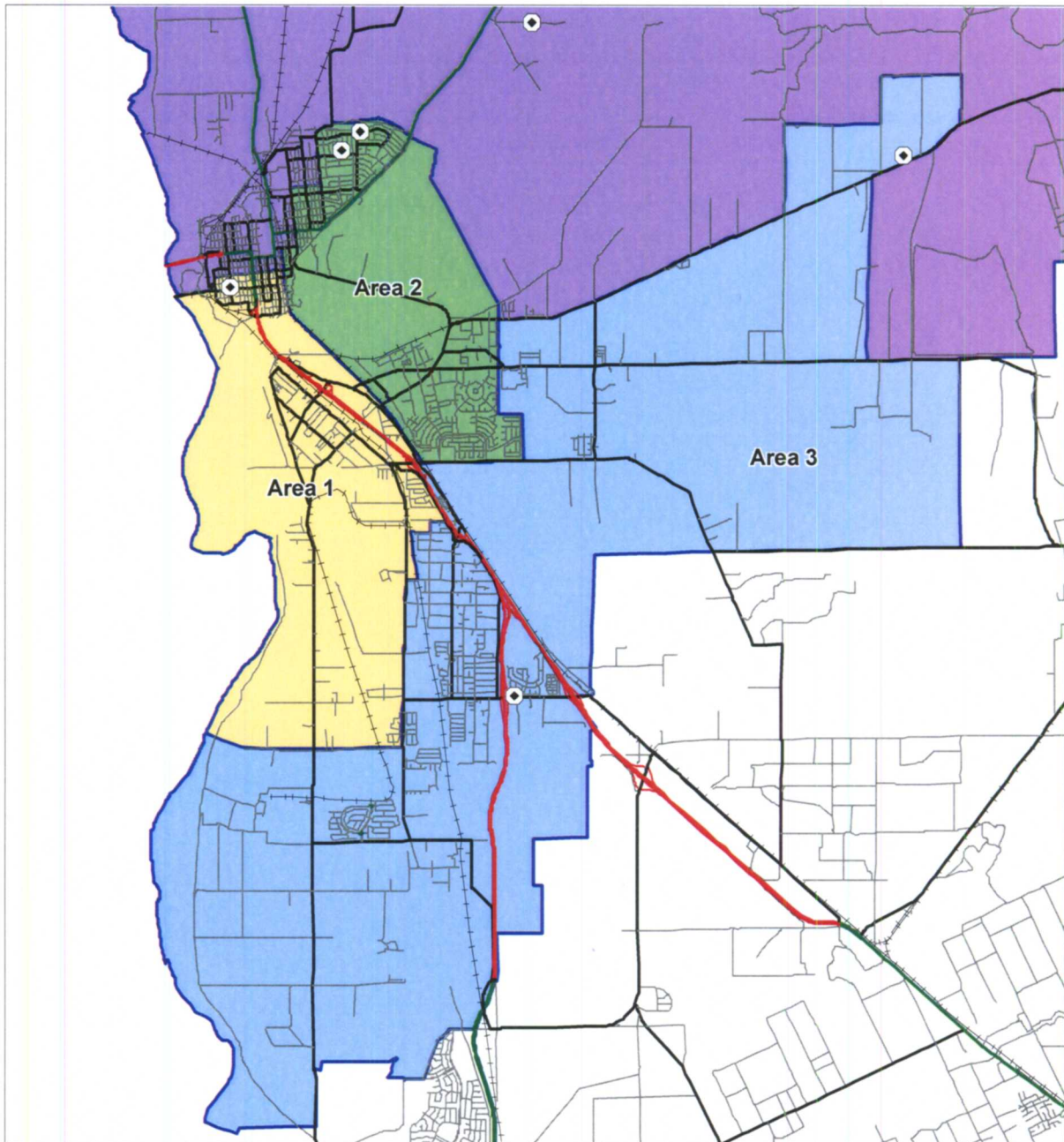
- Keep communities together
- School Attendance Boundaries
- Location of Current Trustees
- Natural Boundaries (highways, rivers, railroads)
- Contiguous Areas

Trustee Areas - Plan A



This plan does not dislodge any of the current school board members.

Trustee Areas - Plan A Close-up



Marysville Joint Unified School District
Census 2010 Data Summary by Trustee Areas
Plan A

Total Population Statistics

Area:	1	2	3	4	Total
Trustees:	1	2	2	2	7
Population	8229	16776	16708	16857	58570
% of Total Pop.	14.05%	28.64%	28.53%	28.78%	
Ideal Pop.	8367	16734	16734	16734	
Ideal Pop. %	14.29%	28.57%	28.57%	28.57%	
Deviation	-138	42	-26	123	Peak 261
Dev %	-1.65%	0.25%	-0.04%	0.21%	1.90%

Peak Deviation may not exceed 10%.

18+ Population Statistics

Area:	1	2	3	4	Total
Trustees:	1	2	2	2	7
18+ Population	5728	11595	11501	13127	41951
% of Pop.	13.65%	27.64%	27.42%	31.29%	
Ideal Pop.	5993	11986	11986	11986	
Ideal Pop. %	14.29%	28.57%	28.57%	28.57%	
Deviation	-265	-391	-485	1141	Peak 1626
Dev %	-4.42%	-3.26%	-1.16%	2.72%	7.14%

CVAP Statistics

Area:	1	2	3	4	Total
Trustees:	1	2	2	2	7
CVAP	4894	10000	11056	11954	37904
% of Pop.	12.91%	26.38%	29.17%	31.54%	
Ideal Pop.	5415	10830	10830	10830	
Ideal Pop. %	14.29%	28.57%	28.57%	28.57%	
Deviation	-521	-830	226	1124	Peak 1954
Dev %	-9.62%	-7.66%	0.60%	2.97%	12.59%

Marysville Joint Unified School District
Trustee Boundary Plan



Area:	1	%	2	%	3	%	4	%	Total	%
Trustees:	1		2		2		2		7	
Total Population	8229		16776		16708		16857		58570	
Hispanic	2757	33.50%	4805	28.64%	5424	32.46%	2537	15.05%	15523	26.50%
White - NH	3953	48.04%	8603	51.28%	8530	51.05%	12524	74.30%	33610	57.38%
Black - NH	238	2.89%	681	4.06%	411	2.46%	253	1.50%	1583	2.70%
American Indian - NH	209	2.54%	195	1.16%	330	1.98%	349	2.07%	1083	1.85%
Asian - NH	656	7.97%	1667	9.94%	1216	7.28%	400	2.37%	3939	6.73%
Pacific Islander - NH	46	0.56%	54	0.32%	82	0.49%	32	0.19%	214	0.37%
Other - NH	19	0.23%	9	0.05%	23	0.14%	24	0.14%	75	0.13%
Multiple Races - NH	351	4.27%	762	4.54%	692	4.14%	738	4.38%	2543	4.34%
18+ Population	5728		11595		11501		13127		41951	
Hispanic	1611	28.13%	2789	24.05%	3158	27.46%	1575	12.00%	9133	21.77%
White - NH	3153	55.05%	6631	57.19%	6585	57.26%	10268	78.22%	26637	63.50%
Black - NH	182	3.18%	484	4.17%	289	2.51%	203	1.55%	1158	2.76%
American Indian - NH	158	2.76%	144	1.24%	241	2.10%	269	2.05%	812	1.94%
Asian - NH	382	6.64%	1112	6.63%	777	4.65%	309	1.83%	2580	4.40%
Pacific Islander - NH	29	0.51%	34	0.29%	52	0.45%	20	0.15%	135	0.32%
Other - NH	11	0.19%	7	0.06%	16	0.14%	19	0.14%	53	0.13%
Multiple Races - NH	202	3.53%	394	3.40%	383	3.33%	464	3.53%	1443	3.44%
CVAP	4894		10000		11056		11954		37904	
Hispanic	1085	22.17%	1423	14.23%	1829	16.54%	1009	8.44%	5346	14.10%
White - NH	2952	60.32%	6742	67.42%	7395	66.89%	9517	79.61%	26606	70.19%
Black - NH	104	2.13%	435	4.35%	278	2.51%	155	1.30%	972	2.56%
American Indian - NH	115	2.35%	59	0.59%	280	2.53%	145	1.21%	599	1.58%
Asian - NH	334	6.82%	894	8.94%	692	6.26%	418	3.50%	2338	6.17%
Pacific Islander - NH	3	0.06%	37	0.37%	59	0.53%	11	0.09%	110	0.29%
Multiple Races - NH	301	6.15%	410	4.10%	523	4.73%	699	5.85%	1933	5.10%

NH = Not of Hispanic Origin

CVAP = Citizen Voting Age Population

In this plan, the boundaries meet the requirement of being balanced when looking at both the population totals and those 18 and over. The area with the highest White population percentage is Area 4. Area 1 has the highest Hispanic population percentage.

Procedure to Adopt "District-Based" or Trustee Area Elections

There are several steps to implementing a change in the election method. The first steps have been made to study the demographics and to develop a proposed map for implementation of "Trustee Area" boundaries. The next steps will now include getting approval by the County Committee and the Department of Justice at which point the information will be filed with the County Election Department.

- Final Document/Trustee Map Submitted to County Committee
- County Committee holds Public Hearing
- Submittal of Pre-Clearance request to US Department of Justice (if needed)
- County Committee approves Proposal to change election method
- County Committee approves by-trustee area plan
- Send results to the County Elections Department

All of these steps need to be accomplished at least 120 days prior to the election impacted by these changes. The Trustees will then be elected by-trustee area when their current terms expire.

The County Committee on School District Organization can also address issues such as the number of board members for the District in addition to the election method. A minimum of one public hearing is required to be held by the County Committee to allow for public input on the issues being discussed.

It is recommended that the District request the County Committee to approve the change in election method at the same time it is approving the proposed trustee area map in order to streamline the process. However, it can also be done as two separate steps.

For a November 2012 election, the deadline to file the notice with the County Elections Department is the first week of July 2012. However, our goal is to get the filing done by the end of March 2012.

The pre-clearance with the US Attorney General is required for any school district that is in or represents a portion of Kings, Merced, Monterey or Yuba counties.

Conclusion

This report and map show the plan approved by the School Board to continue in the process of implementing a district-based election method utilizing "Trustee Areas".

If any comments are received by the County Committee or the U.S. Department of Justice they will be shared with the School Board for consideration before the final submittal of these documents to the County Elections Department.